
	DEPARTMENT OF FARM MACHINERY AND POWER ENGINEERING COLLEGE OF AGRICULTURAL ENGINEERING AND TECHNOLOGY CCS HARYANA AGRICULTURAL UNIVERSITY HISAR-125004, HARYANA	
Phone:01662-255447		e-mail: fpm@hau.ernet.in http://hau.ernet.in hau.machinerytesting@gmail.com

SPECIFICATION SHEET OF TRACTOR OPERATED DISC HARROW

1.0	General	:	
	Name of machine	:	
	Name and address of manufacturer	:	
	Name and address of applicant	:	
	Selling price in India	:	
2.1	Gang frame:		
	a) Type and material	:	
	b) Size of angle section, mm	:	
	Left gang		
		Length	:
		Width	:
	Right gang		
		Length	:
		Width	:
2.2	Weight box::		
	a) Type and material		
	b) Number		
	c) Size of scrapper (mm)		
	d) Location		
	e) Method of fixing		
	f) Adjustment		
2.3	Scraper assembly:		
	a) Type and material	:	
	b) Number	:	
	c) Size of scrapper (mm)	:	
	d) Location	:	
	e) Method of fixing	:	
	f) Adjustment	:	
2.4	Gang shaft:		
	a) Type and material	:	
	b) Length of shaft (mm)	:	
	c) Dia. of shaft (mm)	:	
	d) Length of threaded portion (mm)	:	
	e) Dia. of threaded portion (mm)	:	
2.5	Disc gang:		
	a) Number	:	
	b) No. & type of disc in each gang	:	
	c) Bearings	:	
	d) Method of mounting of each disc	:	
	e) Size of bolt (mm)		
		Length	:
		Dia.	:
		Pitch	:
	f) Method of changing the gang angle	:	
	g) method of fixing one gang frame to	:	

		another		
2.6	Gang angle:			
	a)	Angle made between axis of the gang and the line perpendicular to the direction of motion (deg.)	:	
2.7	Spool:			
	a)	Type and no. of spools	:	
	b)	Length (mm)	:	
	c)	Diameter (mm)	:	
	d)	Material	:	
	e)	Dia. of spool with collar	:	
		Big end	:	
		Small end	:	
		Middle of spool	:	
	f)	Method of mounting	:	
	g)	Type of key	:	
	h)	Size of key (mm)	:	
2.8	Bumper:			
	a)	Type	:	
	b)	Size (mm)	:	
		Diameter	:	
		Thickness	:	
2.9	Concave disc:			

Sr.	Specification	Size
1	Type	
2	Make	
3	Material	
4	Dia. of disc (mm)	
5	Concavity (mm)	
6	Bevel angle	
7	Width of bevel edge (mm)	
8	Thickness of disc (mm)	
9	Thickness of bevel edge (mm)	
10	Type of centre hole	
11	Size of center hole (mm)	
12	Size of key hole (mm)	
13	Method of fixing	

2.10	Type of hitch and its details :			
	a)	Type and material	:	
	b)	Shape	:	

Specification of Hitch Pyramid As per IS: 4468-1997 (Part-I)

Sr.	Dimension (Refer Fig.1)	Description	Measurement
Upper Hitch attachments			
1	d_1	Diameter of hitch pin hole	
2	$b\phi_1$	Width between inner faces of yoke	
3	$b\phi_2$	Width between outer faces of yoke	
Lower hitch points			
4	D_2	Dia. of hitch pin	
5	$b\phi_3$	Linch pin hole distance	
6	l	Lower hitch point span	

Other dimensions		
	Diameter of lynch pin hole	
7	d	For upper hitch pin
8		For lower hitch pin
9	h	Mast height

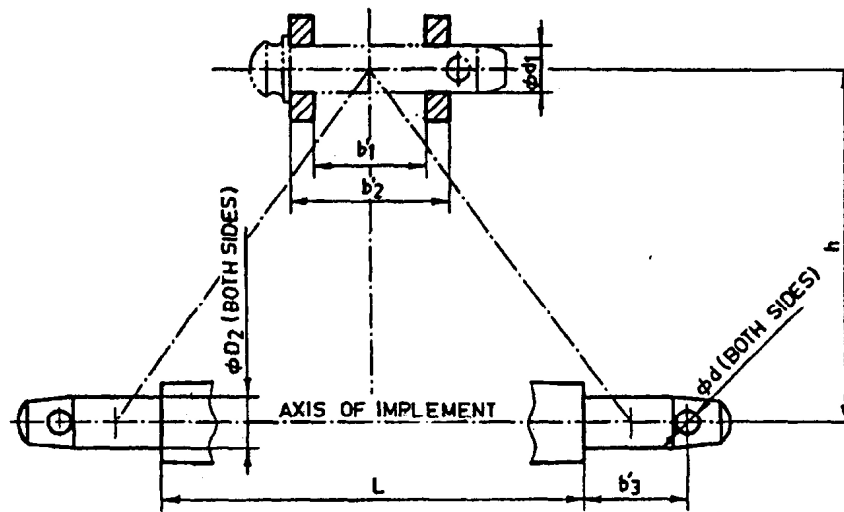


Fig. 1 : Implement Hitch Attachment

2.11	Arrangement of transport	:	
------	--------------------------	---	--

3	Overall dimensions (mm) :		
	a)	Length	:
	b)	Width	:
	c)	Height	:
	d)	Mass, (kg)	:
4	Color of implement		:
5	Material used		

Sr.	Name of components	Material
1	Frame	
2	Gang axle	
3	Spool	
4	Scraper	
5	Gang angling mechanism	
6	Transport wheel	
7	Loading platform , if provided	
8	Draw bar /hitch	
9	Gang bearing	
10	Hitch pin	
11	Discs	

Place:

Date:

Signature: _____

Name : _____

Designation: _____