



**DEPARTMENT OF FARM MACHINERY AND POWER ENGINEERING  
COLLEGE OF AGRICULTURAL ENGINEERING AND TECHNOLOGY  
CCS HARYANA AGRICULTURAL UNIVERSITY  
HISAR-125004, HARYANA**



Phone:01662-255447

e-mail: fpm@hau.ernet.in

<http://hau.ernet.in>

hau.machinerytesting@gmail.com

**SPECIFICATION SHEET OF TRACTOR OPERATED DISC HARROW**

1.0	<b>General</b>	:	
	Name of machine	:	
	Name and address of manufacturer	:	
	Name and address of applicant	:	
	Selling price in India	:	
2.1	<b>Gang frame:</b>		
	a) Type and material	:	
	b) Size of angle section, mm	:	
	Left gang		
		Length	:
		Width	:
	Right gang		
		Length	:
		Width	:
2.2	<b>Weight box::</b>		
	a) Type and material		
	b) Number		
	c) Size of scrapper (mm)		
	d) Location		
	e) Method of fixing		
	f) Adjustment		
2.3	<b>Scraper assembly:</b>		
	a) Type and material	:	
	b) Number	:	
	c) Size of scrapper (mm)	:	
	d) Location	:	
	e) Method of fixing	:	
	f) Adjustment	:	
2.4	<b>Gang shaft:</b>		
	a) Type and material	:	
	b) Length of shaft (mm)	:	
	c) Dia. of shaft (mm)	:	
	d) Length of threaded portion (mm)	:	
	e) Dia. of threaded portion (mm)	:	
2.5	<b>Disc gang:</b>		
	a) Number	:	
	b) No. & type of disc in each gang	:	
	c) Bearings	:	
	d) Method of mounting of each disc	:	
	e) Size of bolt (mm)		
		Length	:
		Dia.	:
		Pitch	:
	f) Method of changing the gang angle	:	
	g) method of fixing one gang frame to	:	

		another		
2.6	<b>Gang angle:</b>			
	a)	Angle made between axis of the gang and the line perpendicular to the direction of motion (deg.)	:	
2.7	<b>Spool:</b>			
	a)	Type and no. of spools	:	
	b)	Length (mm)	:	
	c)	Diameter (mm)	:	
	d)	Material	:	
	e)	Dia. of spool with collar		
		Big end	:	
		Small end	:	
		Middle of spool	:	
	f)	Method of mounting	:	
	g)	Type of key	:	
	h)	Size of key (mm)	:	
2.8	<b>Bumper:</b>			
	a)	Type	:	
	b)	Size (mm)		
		Diameter	:	
		Thickness	:	
2.9	<b>Concave disc:</b>			

Sr.	Specification	Size
1	Type	
2	Make	
3	Material	
4	Dia. of disc (mm)	
5	Concavity (mm)	
6	Bevel angle	
7	Width of bevel edge (mm)	
8	Thickness of disc (mm)	
9	Thickness of bevel edge (mm)	
10	Type of centre hole	
11	Size of center hole (mm)	
12	Size of key hole (mm)	
13	Method of fixing	

2.10	<b>Type of hitch and its details :</b>			
	a)	Type and material	:	
	b)	Shape	:	

#### Specification of Hitch Pyramid As per IS: 4468-1997 (Part-I)

Sr.	Dimension (Refer Fig.1)	Description	Measurement
Upper Hitch attachments			
1	$d_1$	Diameter of hitch pin hole	
2	$b'_1$	Width between inner faces of yoke	
3	$b'_2$	Width between outer faces of yoke	
Lower hitch points			
4	$D_2$	Dia. of hitch pin	
5	$b'_3$	Linch pin hole distance	
6	$l$	Lower hitch point span	

Other dimensions		
Diameter of lynch pin hole		
7	d	For upper hitch pin
8		For lower hitch pin
9	h	Mast height

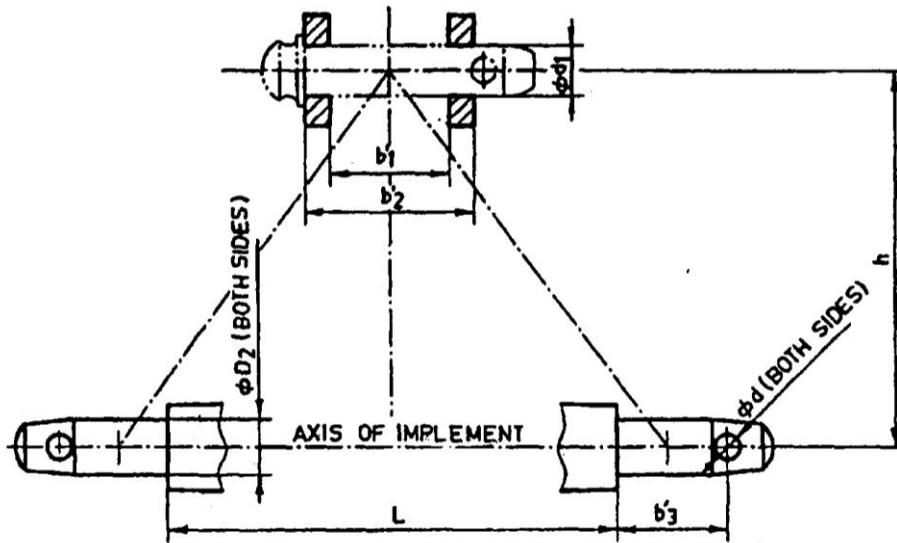


Fig. 1 : Implement Hitch Attachment

2.11	Arrangement of transport	:	
------	--------------------------	---	--

<b>3</b>	<b>Overall dimensions (mm) :</b>		
	a) Length	:	
	b) Width	:	
	c) Height	:	
	d) Mass, (kg)	:	
<b>4</b>	<b>Color of implement</b>	:	
<b>5</b>	<b>Material used</b>	:	

Sr.	Name of components	Material
1	Frame	
2	Gang axle	
3	Spool	
4	Scraper	
5	Gang angling mechanism	
6	Transport wheel	
7	Loading platform , if provided	
8	Draw bar /hitch	
9	Gang bearing	
10	Hitch pin	
11	Discs	

Place:  
Date:

Signature: \_\_\_\_\_

Name : \_\_\_\_\_

Designation: \_\_\_\_\_