



**DEPARTMENT OF FARM MACHINERY AND POWER ENGINEERING  
COLLEGE OF AGRICULTURAL ENGINEERING AND TECHNOLOGY  
CCS HARYANA AGRICULTURAL UNIVERSITY  
HISAR-125004, HARYANA**



Phone:01662-255447

e-mail: fpm@hau.ernet.in

<http://hau.ernet.in>

hau.machinerytesting@gmail.com

**SPECIFICATION SHEET OF TRACTOR MOUNTED HYDRAULIC REV. M. B. PLOUGH**

|       |                                  |  |                    |   |  |
|-------|----------------------------------|--|--------------------|---|--|
| 1.0   | <b>General</b>                   |  | :                  |   |  |
|       | Name of machine                  |  | :                  |   |  |
|       | Name and address of manufacturer |  | :                  |   |  |
|       | Name and address of applicant    |  | :                  |   |  |
|       | Selling price in India           |  | :                  |   |  |
| 2.1   | <b>Frame:</b>                    |  |                    |   |  |
|       | a)                               | Constructional details                                   | :                  |   |  |
|       | b)                               | Dimensions (mm):   | :                  |   |  |
|       | i                                | Length   | :                  |   |  |
|       | ii                               | Width  | -At front          | : |  |
|       |                                  |  | -At rear           | : |  |
|       | iii                              | Number & size of holes on frame for fixing standard (mm) | :                  |   |  |
| 2.2   | <b>Standard:</b>                 |  |                    |   |  |
|       | a)                               | Numbers  | :                  |   |  |
|       | b)                               | Material   | :                  |   |  |
|       | c)                               | Type   | :                  |   |  |
|       | d)                               | Dimensions (mm)  | - Projected length | : |  |
|       |                                  |  | - Curved length    | : |  |
|       |                                  |  | - Width            | : |  |
|       |                                  |  | - Thickness        | : |  |
|       | e)                               | No., size & spacing of holes for fixing frog (mm)        | :                  |   |  |
|       | f)                               | No. & size of holes for fixing to the frame              | :                  |   |  |
| g)    | Method of fixing                 | :  |                    |   |  |
| 2.3   | <b>Plough Bottoms:</b>           |  |                    |   |  |
|       | a)                               | Numbers  | :                  |   |  |
|       | b)                               | Type   | :                  |   |  |
|       | c)                               | Size of plough (mm)                                      | :                  |   |  |
|       | d)                               | Vertical suction (mm)                                    | :                  |   |  |
|       | e)                               | Horizontal suction (mm)                                  | :                  |   |  |
| f)    | Constructional details           | :  |                    |   |  |
| 2.3.1 | <b>Mould Board:</b>              |  |                    |   |  |
|       | a)                               | Numbers  | :                  |   |  |
|       | b)                               | Type   | :                  |   |  |
|       | c)                               | Material   | :                  |   |  |
| d)    | Dimensions (mm):                 | :  |                    |   |  |

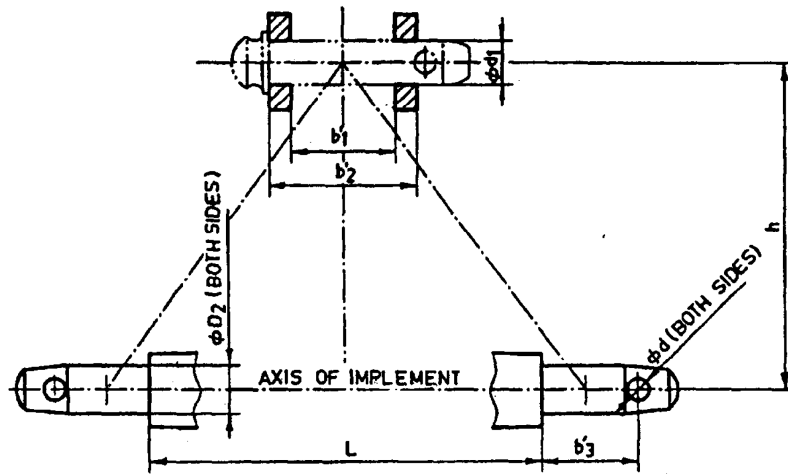
|       |                               |  |   |  |
|-------|-------------------------------|--|---|--|
|       |                               | - Length   | : |  |
|       |                               | - Width  | : |  |
|       |                               | - Thickness  | : |  |
|       | e)                            | No & size of hole on mould board (mm)                              | : |  |
|       | f)                            | Method of fixing mould board                                       | : |  |
| 2.3.2 | <b>Share:</b>                 |  |   |  |
|       | a)                            | Type   | : |  |
|       | b)                            | Constructional details   | : |  |
|       | c)                            | Dimensions (mm)  | : |  |
|       | d)                            | Angle of inclination of share along the direction of travel (deg.) | : |  |
|       | e)                            | No & size of holes on share (mm)                                   | : |  |
|       | f)                            | Method of fixing share to the bottom                               | : |  |
| 2.3.3 | <b>Share bar (Bar-point):</b> |  |   |  |
|       | a)                            | Type   | : |  |
|       | b)                            | Material   | : |  |
|       | c)                            | Dimensions (mm)  | : |  |
| 2.3.4 | <b>Shin of mould board:</b>   |  |   |  |
|       | a)                            | Numbers  | : |  |
|       | b)                            | Material & thickness (mm)  | : |  |
|       | c)                            | No & size of hole on shin for fixing on frog                       | : |  |
| 2.3.5 | <b>Landside:</b>              |  |   |  |
|       | a)                            | Numbers  | : |  |
|       | b)                            | Material   | : |  |
|       | c)                            | Dimensions (mm)  | : |  |
|       |                               | - Length & Thickness   | : |  |
|       | d)                            | No & size of hole on landside (mm)                                 | : |  |
|       | e)                            | Method of fixing landside to frog                                  | : |  |
| 2.3.6 | <b>Braces:</b>                |  |   |  |
|       | a)                            | No. of braces  | : |  |
|       | b)                            | Material & size (mm)   | : |  |
|       | c)                            | Dimensions (mm)  | : |  |
|       |                               | - Projected length   | : |  |
|       | d)                            | No. & size of hole on each brace (mm)                              | : |  |
|       | e)                            | Method of fixing   | : |  |
| 2.3.7 | <b>Frog:</b>                  |  |   |  |
|       | a)                            | Numbers  | : |  |
|       | b)                            | Material   | : |  |
|       | c)                            | Dimensions (mm)  | : |  |
|       | d)                            | No. & size of holes on frog (mm)                                   | : |  |
|       | i                             | -for mould board   | : |  |
|       | ii                            | -for share   | : |  |
|       | iii                           | -for standard  | : |  |

|       |                                 |   |   |  |
|-------|---------------------------------|---|---|--|
|       | iv                              | -for landside   | : |  |
|       | v                               | -for shin   | : |  |
| 2.4   | <b>Reversing Mechanism:</b>     |   |   |  |
|       | a)                              | Type  | : |  |
|       | b)                              | Mode of operation   | : |  |
| 2.4.1 | <b>Main Shaft:</b>              |   |   |  |
|       | a)                              | Constructional details  | : |  |
| 2.4.2 | <b>Cam:</b>                     |   |   |  |
|       | a)                              | Material  | : |  |
|       | b)                              | Dimensions (mm)   |   |  |
|       | i                               | -Total Length   | : |  |
|       | ii                              | -Effective length   | : |  |
|       | iii                             | -Width  | : |  |
|       | iv                              | -Thickness  | : |  |
|       | v                               | -Size of cam pin (mm)   | : |  |
|       | vi                              | -Size of linch pin hole on cam pin                              | : |  |
| 2.4.3 | <b>Hydraulic Cylinder:</b>      |   |   |  |
|       | a)                              | Type  | : |  |
|       | b)                              | Size of cylinder (mm)   | : |  |
|       | c)                              | Size of high pressure pipe line fitted on the cylinder (mm)     | : |  |
|       | d)                              | Size of piston (mm)   | : |  |
|       | e)                              | Size of connecting arm (mm)                                     | : |  |
|       | f)                              | Stoke length (mm)   | : |  |
| 2.4.4 | <b>Distributor:</b>             |   | : |  |
|       | a)                              | Type  | : |  |
|       | b)                              | Overall Size (mm)   | : |  |
|       | c)                              | No. and size of hose pipes between tractor and distributor (mm) | : |  |
| 2.4.5 | <b>Reversing Mechanism Lock</b> |   | : |  |
| 2.5   | <b>Hitch Pyramid:</b>           |   |   |  |
|       | a)                              | Constructional details  | : |  |
|       | b)                              | Size of upper hitch (mm)  | : |  |
|       | c)                              | Size of Cross bar (mm)  | : |  |

**Specification of Hitch Pyramid As per IS: 4468-1997 (Part-I)**

| Sr.                     | Dimension<br>(Refer Fig.1) | Description                       | Measurement |
|-------------------------|----------------------------|-----------------------------------|-------------|
| Upper Hitch attachments |                            |                                   |             |
| 1                       | $d_1$                      | Diameter of hitch pin hole        |             |
| 2                       | $b\phi_1$                  | Width between inner faces of yoke |             |
| 3                       | $b\phi_2$                  | Width between outer faces of yoke |             |
| Lower hitch points      |                            |                                   |             |
| 4                       | $D_2$                      | Dia. of hitch pin                 |             |
| 5                       | $b\phi_3$                  | Linch pin hole distance           |             |
| 6                       | $l$                        | Lower hitch point span            |             |
| Other dimensions        |                            |                                   |             |
|                         | Diameter of linch pin hole |                                   |             |
| 7                       | $d$                        | For upper hitch pin               |             |
| 8                       |                            | For lower hitch pin               |             |

|   |   |             |  |
|---|---|-------------|--|
| 9 | h | Mast height |  |
|---|---|-------------|--|



**Implement Hitch Attachment**

|            |                                  |   |  |
|------------|----------------------------------|---|--|
| <b>3.0</b> | <b>Overall dimensions (mm) :</b> |   |  |
| a)         | Length                           | : |  |
| b)         | Width                            | : |  |
| c)         | Height                           | : |  |
| <b>4.0</b> | <b>Total mass (kg)</b>           | : |  |
| <b>5.0</b> | <b>Color of implement</b>        | : |  |

Place:  
Date:

Signature: \_\_\_\_\_

Name : \_\_\_\_\_

Designation: \_\_\_\_\_