



**DEPARTMENT OF FARM MACHINERY AND POWER ENGINEERING
COLLEGE OF AGRICULTURAL ENGINEERING AND TECHNOLOGY
CCS HARYANA AGRICULTURAL UNIVERSITY
HISAR-125004, HARYANA**



Phone:01662-255447

e-mail: fpm@hau.ernet.in

<http://hau.ernet.in>

hau.machinerytesting@gmail.com

SPECIFICATION SHEET OF POTATO PLANTER

1.0	General	
	Name of the implement	:
	Address of Manufacturer	:
	Name & Address of Applicant	:
2.0	Specifications	
	Type	:
	Make	:
	Serial no.	:
	Model	:
	Year of manufacture	:
	Maximum PTO power kW (Ps)	:
	Engine speed for field operation recommended by applicant (rpm)	:
3.0	Constructional Details	
3.1	Ridgers	
	Number of ridgers	:
	Method of changing of ridge spacing	:
	Range of Spacing (mm)	:
	Soil covering device	:
	Method of adjustment of height of soil covering device	:
	Wing width range, Minimum/Maximum	:
	Method of changing of wing width	:
	Depth control	:
3.2	Seed Metering Mechanism	
	Type	:
	No. of openings, if ring type	:
	No. of cups, if cup type	:
	Drive details	:
	Speed ratio of shaft metering device to ground wheel axle	:
	Internal diameter of speed tube (mm)	:
	Provision of shovel in front seed tube	:
	Size of shovel, Length/Width/Thickness	:
	Height of lower end of seed tube, mm	:
	From the ground	:
	From the lower end of the shovel attached to seed tube	:
3.3	Ground Wheel Details	
	No. of wheels	:
	Type of wheels	:

	Size, mm	:	
	Diameter, Maximum/Minimum	:	
	Thickness of sheet	:	
	Method of transmitting power to feed shaft	:	
3.4	Frame		
	Type	:	
	Size of box, mm	:	
	Provision for changing of row spacing	:	
3.5	Operator's seat		
	Type	:	
	Thickness of sheet	:	
	Diameter from centre of seat to hopper edge, mm	:	
	Provision of foot support	:	
3.6	Hopper		
	Capacity, kg	:	
	Type	:	
	Thickness of hopper sheet, mm	:	
4.0	Type of hitch and its details :		
	a) Type	:	
	b) Specifications of Hitch pyramid	:	As per IS:4468 Part-I, 2001 (Cl.5.1) & Part-II, 1998 (Cl.5.1) (All dimensions are in mm)

Sr.	Dimension	Description (Refer Fig.)	Dimension in mm
Upper Hitch attachments			
1	d_1	Diameter of hitch pin hole	
2	b_{ϕ_1}	Width between inner faces of yoke	
3	b_{ϕ_2}	Width between outer faces of yoke	
Lower hitch points			
4	D_2	Dia of hitch pin	
5	b_{ϕ_3}	Linch pin hole distance	
6	l	Lower hitch point span	
Other dimensions			
	Diameter of linch pin hole		
7	d	For upper hitch pin	
8		For lower hitch pin	
9	h	Mast height	

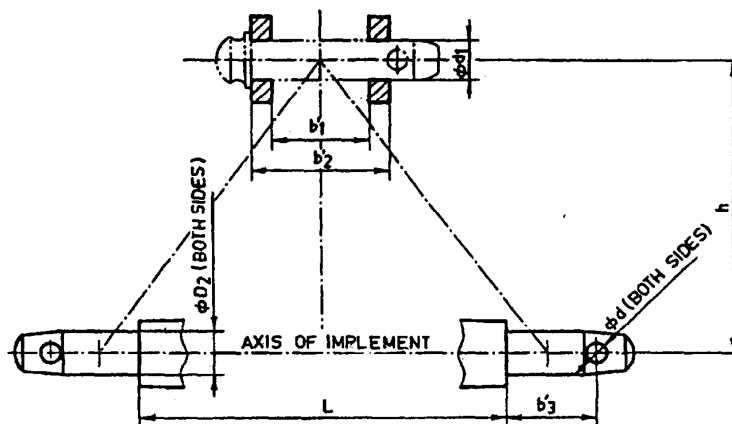


Fig. : Implement Hitch Attachment

5.0	Number of Greasing Points		
	Number of oil holes	:	
6.0	Provisions for adjustments		

	Adequacy of protection of bearings against the ingress of dust	:	
	Provision of lubrication of moving parts	:	
	Provision for belt or chain tightening	:	
	Adequacy of anticorrosive coating		
	Tightness of bolts, and nuts and other fasteners	:	
	Condition of welding of seams	:	
	Other observations	:	
	Tuber distance adjustments	:	
	Row spacing adjustments	:	
	Depth of planting adjustments	:	
	Tuber size adjustments	:	
7.0	Overall dimensions, mm		
	Length	:	
	Width	:	
	Without marker	:	
	With marker	:	
	Height	:	
	Mass, Kg	:	
8.0	Material for construction of various components		
	Axle and shaft	:	
	Seed box	:	
	Tines	:	
	Furrow opener	:	
	Seed carrying chute	:	
	Seed metering mechanism	:	
	Bushes	:	
	Pulley, Sprocket and gear	:	
	Hitching mechanism	:	
	Feed adjusting mechanism	:	
	Depth adjusting mechanism	:	
	Marker	:	
	Seat	:	
	Foot rest	:	
	Bearings	:	
	Share	:	

Place:

Date:

Signature : _____

Name : _____

Designation: _____