



AGRI BUSINESS INCUBATION CENTRE (ABIC), CCS HAU, Hisar

Supported by
NABARD & Ministry of Agriculture and Farmers' Welfare, (GoI)



ABIC Invites Applications From Agri-Startups of Haryana & Neighbouring States/U.T, Under

RKVY-RAFTAAR Scheme



PAHAL - 2022

Idea/Pre-Seed Stage

2 Months
Orientation
Programme

Successful Candidates are
Eligible to Apply for
Grant-in-Aid up to Rs.5 Lacs

SAFAL - 2022

Seed Stage (Prototype/MVP/Commercialisation-Stage)

2 Months
Incubation
Programme

Successful Candidates are
Eligible to Apply for
Grant-in-Aid up to Rs.25 Lacs

STEPS OF SELECTION PROCESS

1st
STEP

Apply For both
programmes: 17th Sep to 17th Oct, 2022

2nd
STEP

Preliminary Screening
Presentation: 27th Oct to 7th Nov, 2022

3rd
STEP

Announcement of Cohort 11th Nov, 2022

4th
STEP

Start of Two months Orientation &
Incubation programme 15th Nov, 2022

KEY BENEFITS



8 Weeks
Workshop



Mentorship from
Experts



World Class
Research Labs



Networking



Successful Candidates are Eligible to Apply for
Grant-in-Aid up to Rs.5 & 25 Lacs

Dr. Atul Dhirga
Director, ABIC
CCSHAU, Hisar

Dr. Jeet Ram Sharma
Controlling Officer, R-ABI
ABIC, CCSHAU, Hisar

Dr. Rajesh Gera
PI, R-ABI, ABIC
CCSHAU, Hisar

Dr. Ravi Gupta
Co-PI, R-ABI, ABIC
CCSHAU, Hisar

Mr. Vikram Sindhu
Business Manager
R-ABI, ABIC, CCSHAU

To Apply

www.hau.ac.in or www.abichauhisar.com

Form Submit at- Cunosil Software Link on Web site

Enquiry > rabihaushar@gmail.com

For More Details Contact : 98136-66056, 8168037620, 01662-255286

Focus Areas for start-ups, entrepreneurs and innovators



Production &
Protection
of Crops



Floriculture \
Nursery Raising



Mushroom &
Bio-pesticide
Production



Supply Chain
Management



Bio-Gas/Bio
Fertilizer
Production



Aquaculture



Tissue
Culture



Agri. Waste
Management



Farm
Mechanization



Processing &
Value Addition



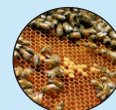
Agri Services



IOT, ICT & AI
in Agriculture



Development
of New
Varieties



Apiculture



Precision
Farming



Farm
Management



Agriculture Input Tools
& Technology



Food Processing
& Value Addition